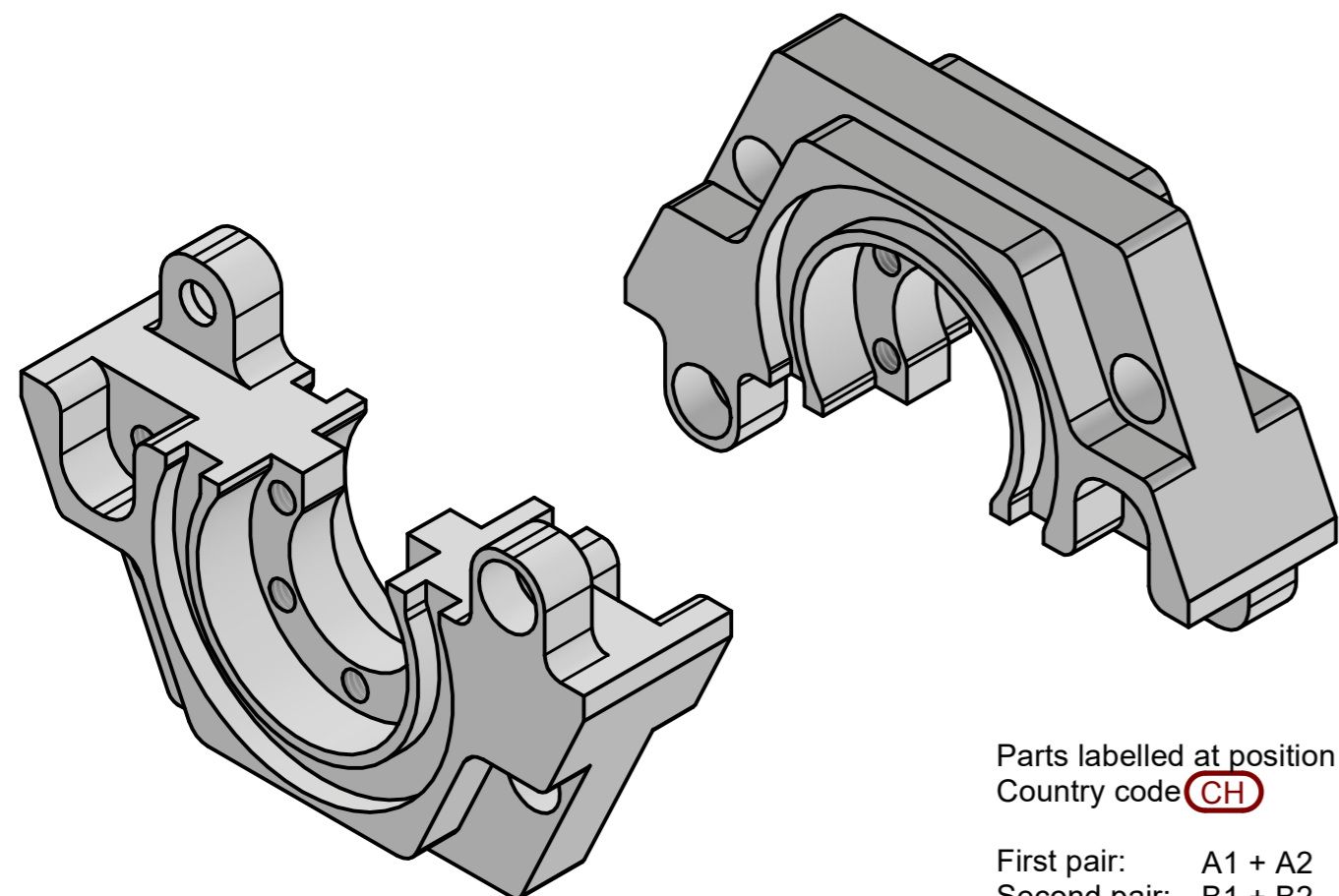
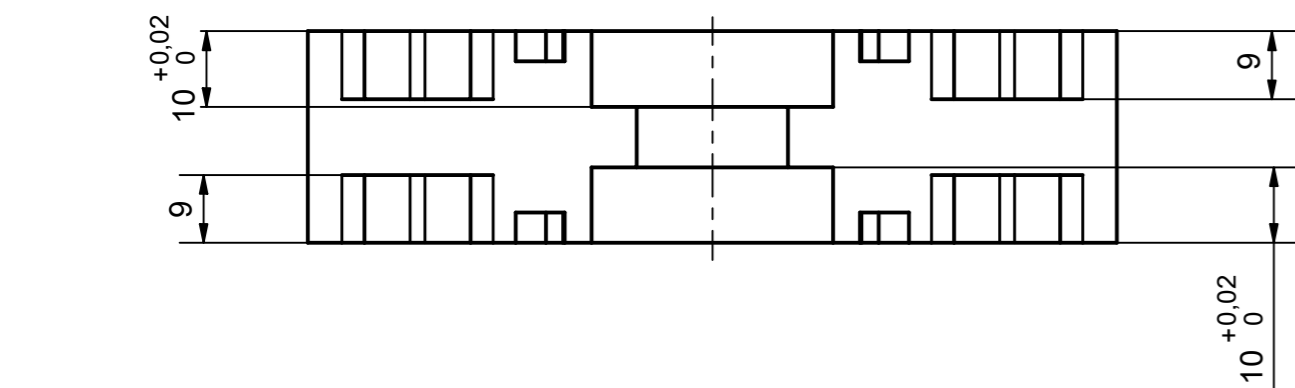
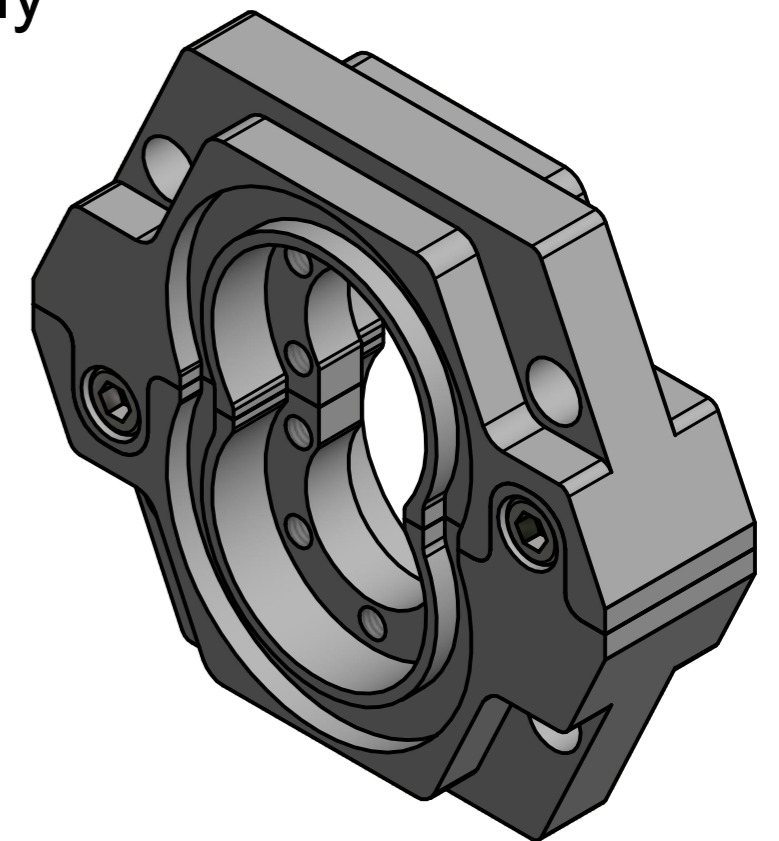


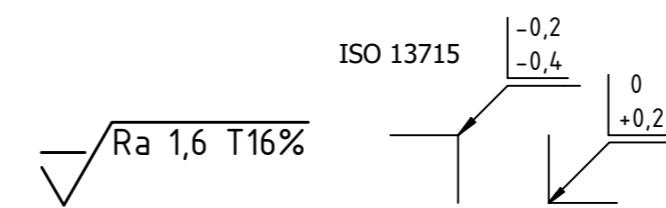
Assembly



Parts labelled at position
Country code **CH**
First pair: A1 + A2
Second pair: B1 + B2
Third pair: C1 + C2

General Tolerances ISO 2768-f
Tolerancing ISO 8015
Form and Positional Tolerances acc. to DIN ISO 1101
Non directed radi R2
Depth of Thread 0/+2mm
Depth of drilled hole 0/+2mm
Depth of reamed hole 0/+0,5mm
Radius ± 0,2mm
Angle ± 0,5°
Important Note:
Non dimensioned features according step-model M#2
General tolerance ISO 22081
ACS

0,3 A B-B C



Fitting Table acc. to DIN ISO 286-2		
FIT	MAX. VALUE	MIN. VALUE
40 H7	40,025	40,000
25 H7	25,021	25,000
20 H7	20,021	20,000
10 H7	10,015	10,000

Parts list			
Pos.	Pcs.	Description	Definition
1	2	ESC 2023 M2-2-1	C45 E
2	4	ISO 4762 - M6 x 10	Hexagon socket head cap ISO4762-M6x10-8.8

Test Project for the 8th EuroSkills
Competition in Gdańsk, Poland 2023.
Copyright © 2023 WorldSkills Europe.
All Rights Reserved.

Skill: CNC-MILLING-07			Drawing No: ESC2023_TP07_M2_ISO1_EN
Scale: 1 : 1	Date: 25.03.2023	Paper: A2	
Drawn / Design by: Juerg Marti CH			Rev: 00
Description: Modul #2			
			Page: 1 of 1

