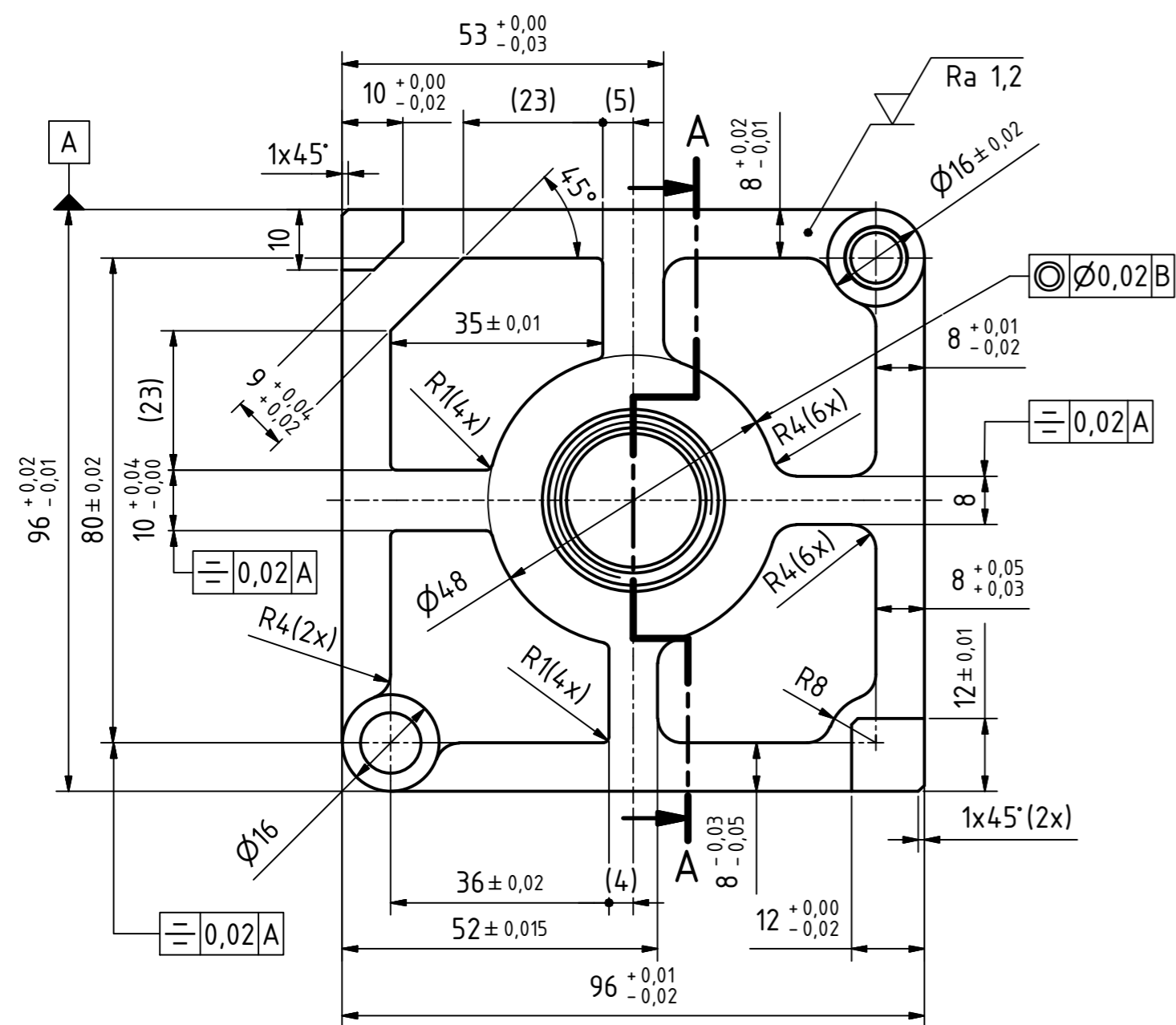
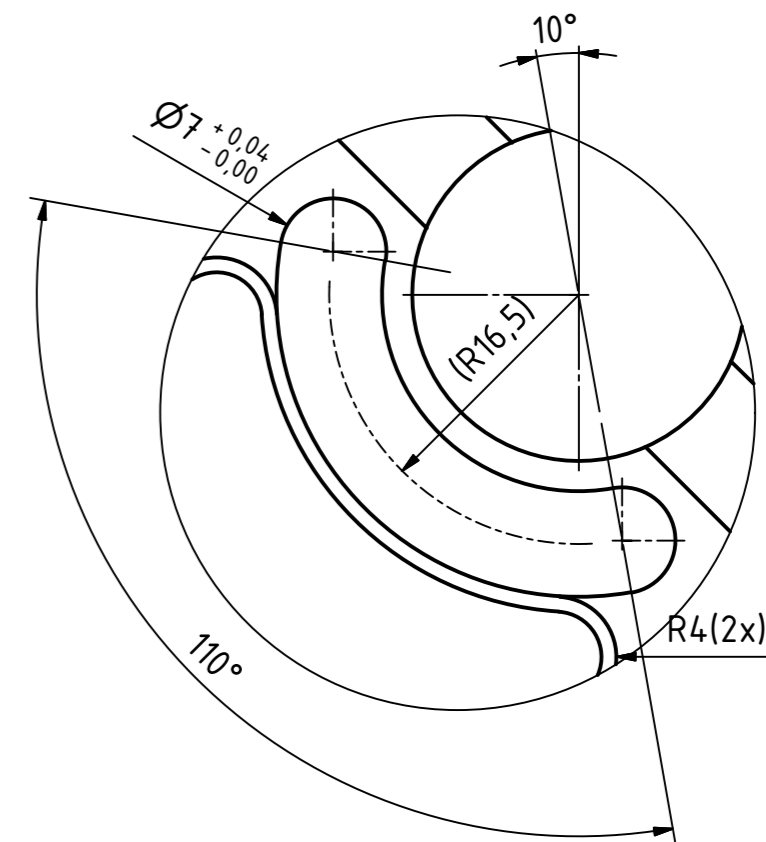
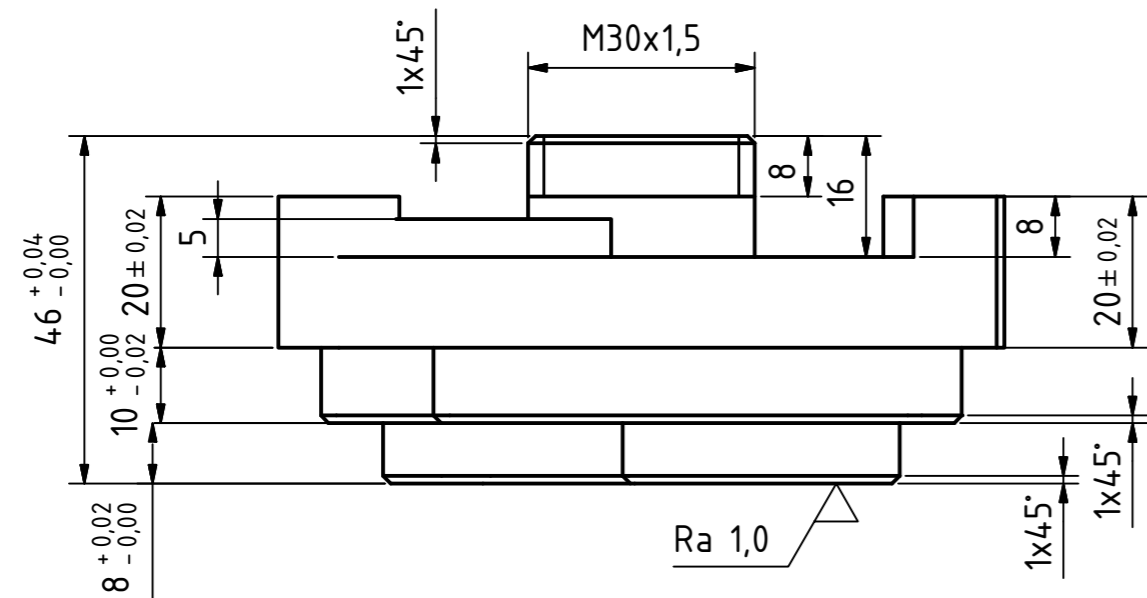
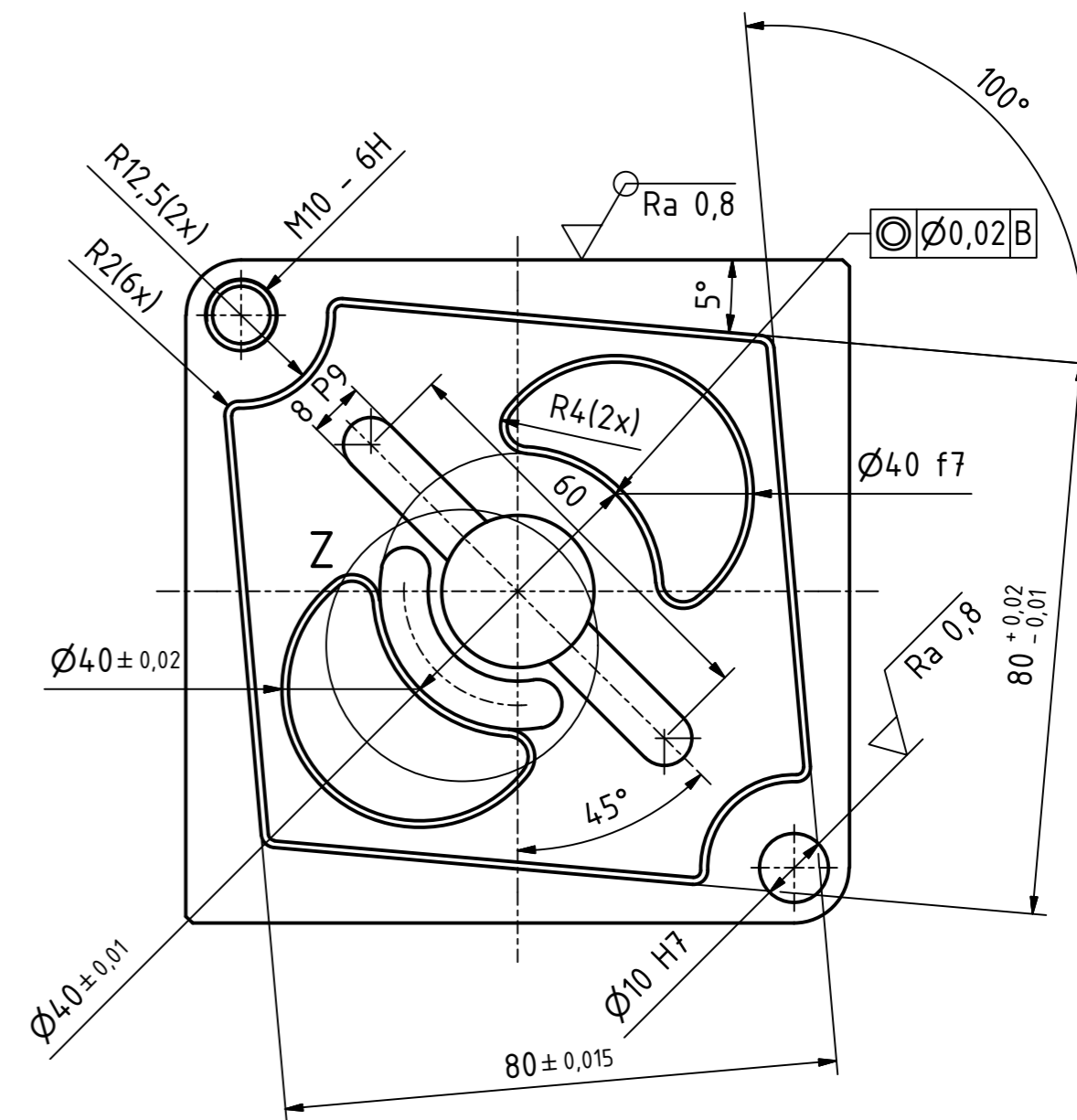
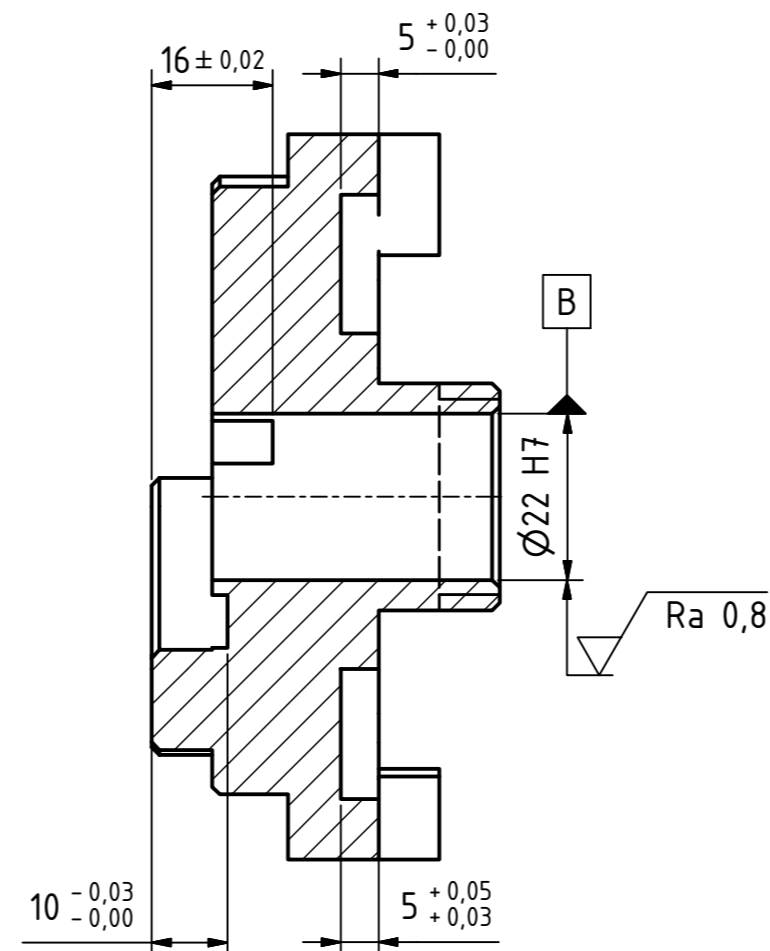


Z (2 : 1)



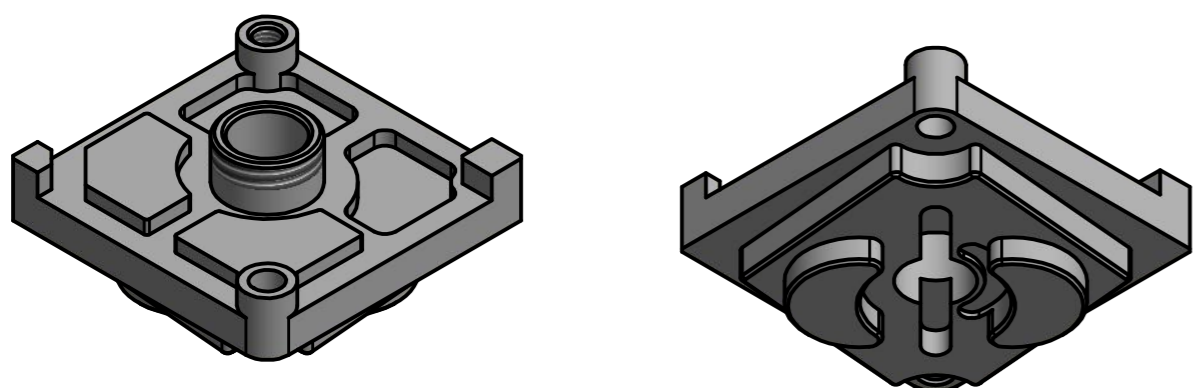
A-A (1 : 1)



Surface Texture acc. to DIN EN ISO 1302

Aluminium AlMgSi 3.2315	100x100x50 (+0,15/-0)
MATERIAL	RAW SIZE

DIN ISO 13715



Pitch Diameter
M30x1,5
max. Ø28,99
min. Ø28,94

General Tolerance ± 0,1
Form and Positional Tolerances acc. to DIN ISO 1101
Depth of Thread 0/+2mm
Depth of Hole 0/+2mm
Depth of Bore 0/+0,5mm
Radius ± 0,2mm
Angle ± 0,5°

	40f7	39,975	39,950
22H7	22,021	22,000	
10H7	10,015	10,000	
8P9	7,985	7,949	
FIT	MAX. VALUE	MIN. VALUE	
FITTING TABLE acc. to DIN ISO 286-2			

Test Project for the 43rd WorldSkills
Competition in São Paulo, Brazil 2015.
Copyright © 2015 WorldSkills International.
All Rights Reserved.



Skill: TP07	Projektion E	 ISO 5456-2
Scale: M1:1	Date: 09.04.2015	
Drawn / Design by: Dieter Geisberger AT	Drawing No: WSC2015_TP07_AT_M1_ISO_E	
Description:	Rev:	Page:
	Appd:	Sign: