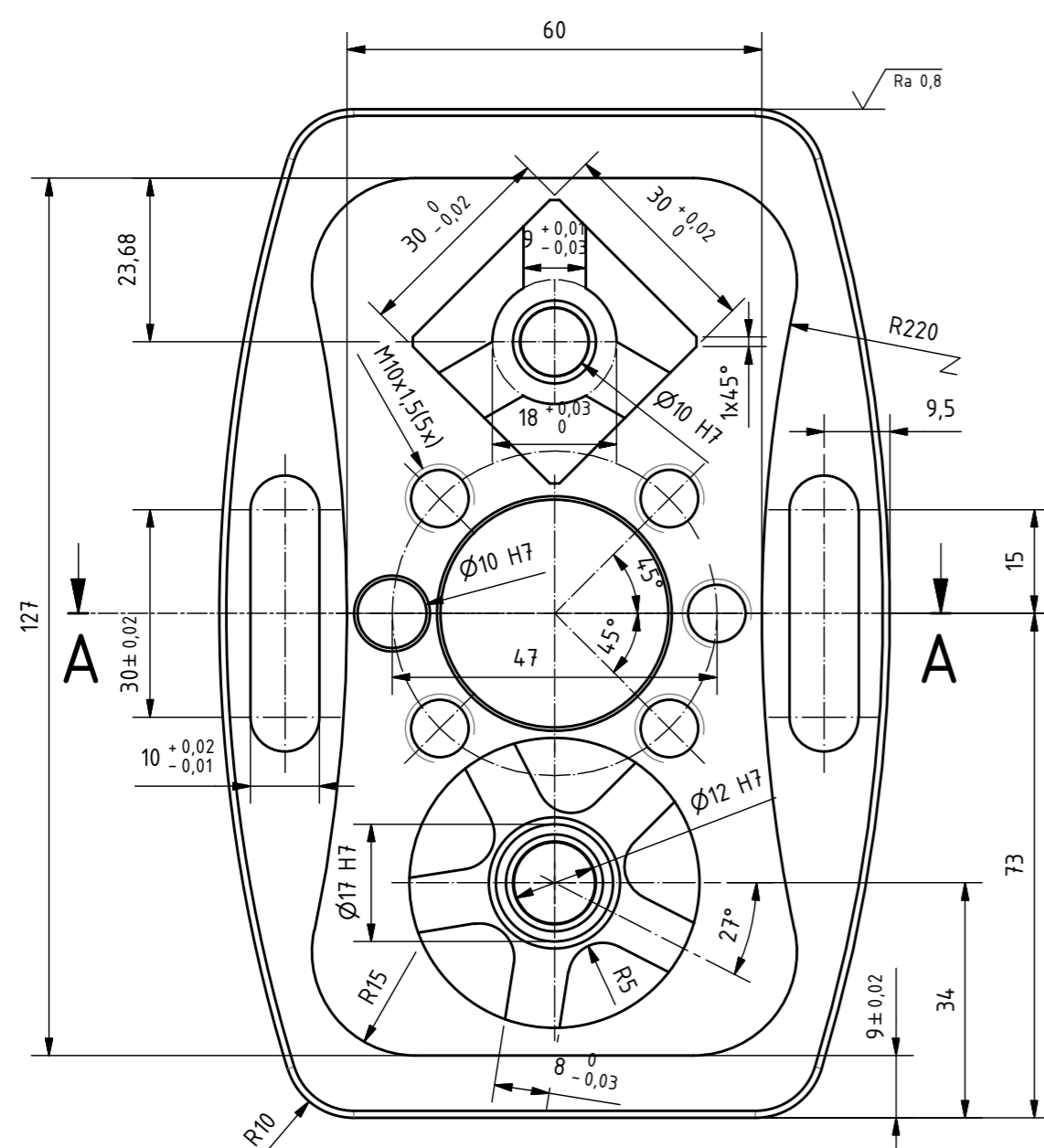
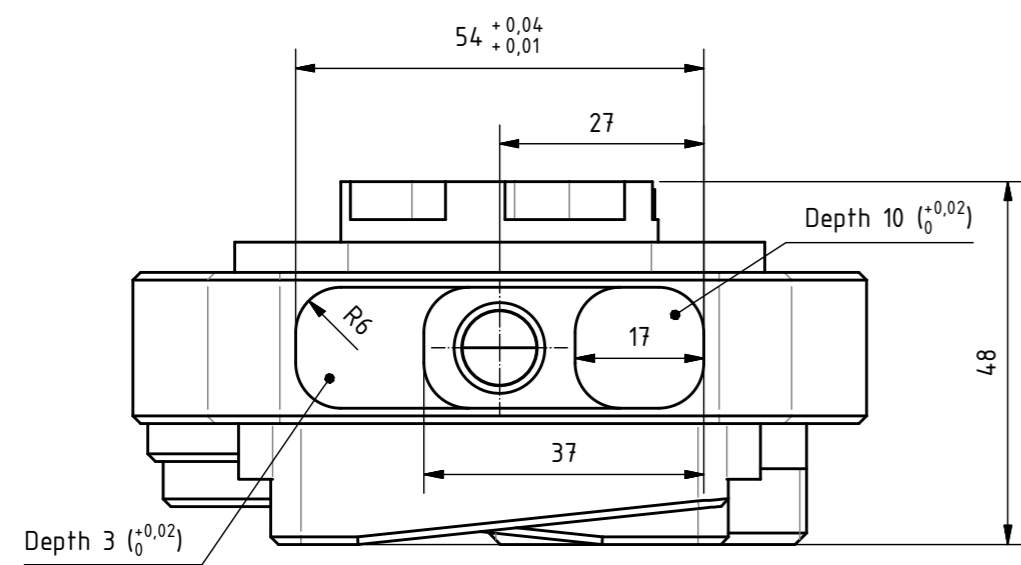
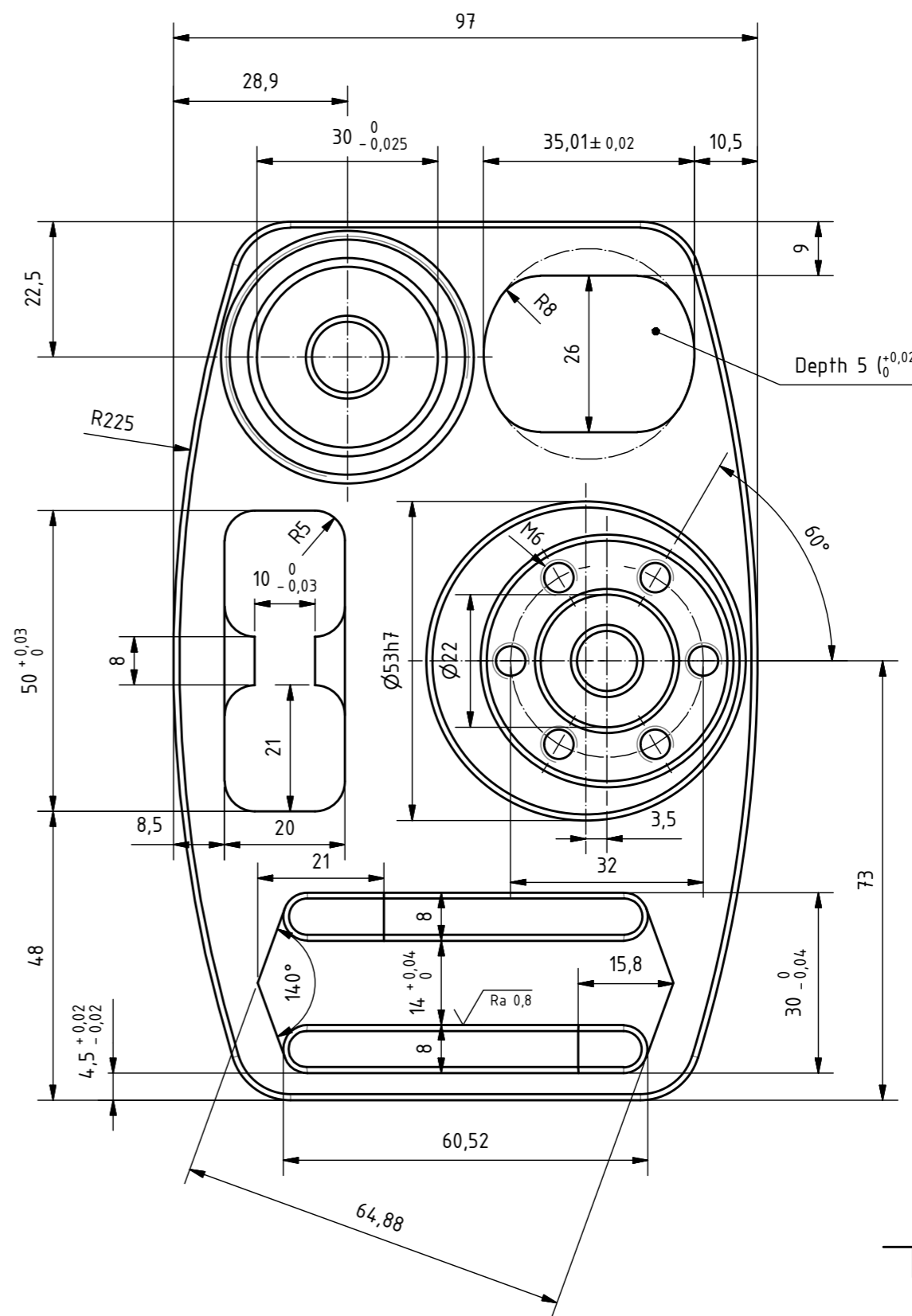
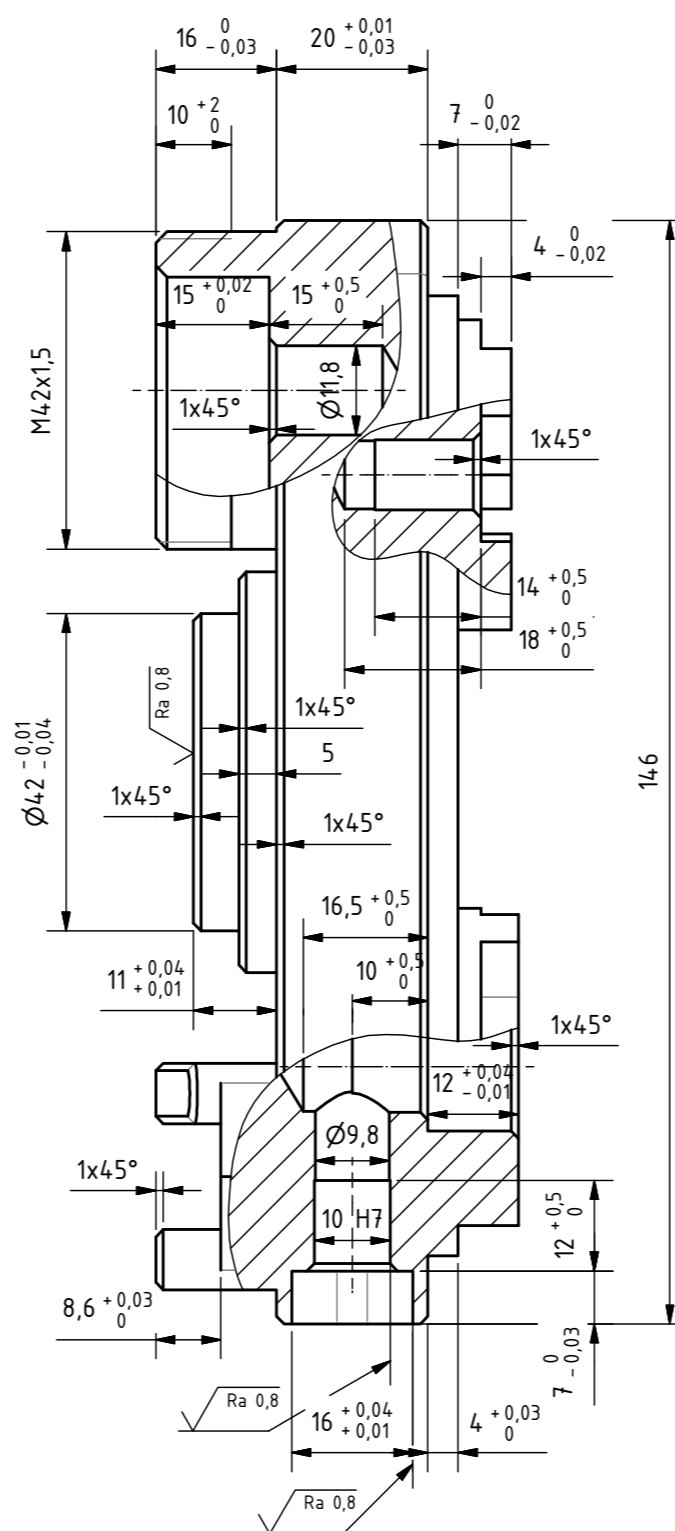
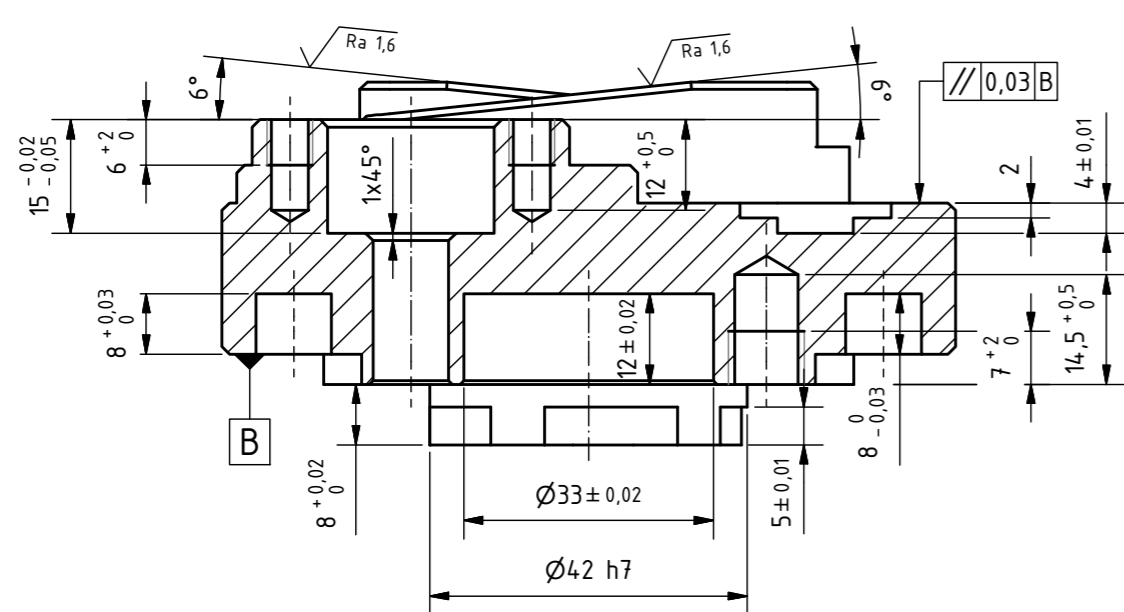


1 $\sqrt{Ra\ 3,2}$ (✓)



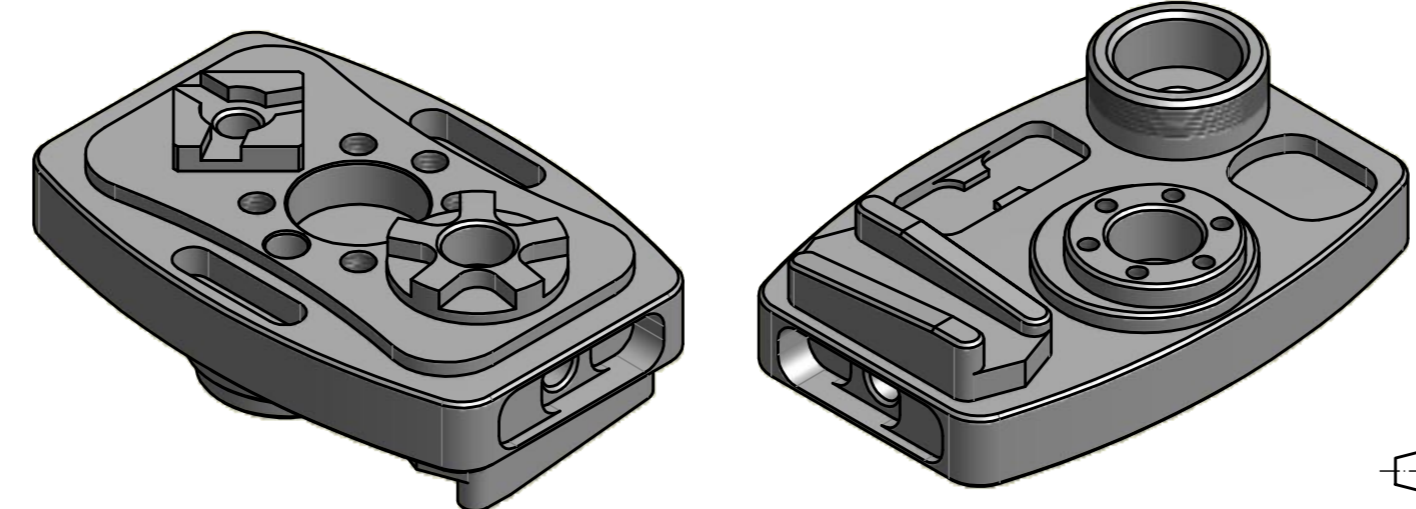
A-A (1:1)



Toleranz Winkel / ±0,5°
 Allgemeintoleranz / ±0,1
 Kanten gebrochen 0,2..0,3 x 45°
 Oberfläche nach DIN ISO 1302
 Werkstueckkantenbruch nach DIN ISO 6784
 Form- und Lagetoleranz nach DIN ISO 1101
 METRISCH

Tolerance angle / ±0,5°
 General Tolerance / ±0,1
 All edges broken 0,2..0,3 x 45°
 Surface texture acc. to DIN ISO 1302
 Edges of working parts acc. to DIN ISO 6784
 Tolerance of form and position acc. to DIN ISO 1101
 METRIC

Tolerance angle / ±0,5°
 Tolerance general / ±0,1
 Toutes les arêtes cassé 0,2..0,3 x 45°
 Surface DIN ISO 1302
 Coupe d'affilage DIN ISO 6784
 Forme DIN ISO 1101
 METRIQUE



Test Project for 41ST WorldSkills
 Competition in London, United Kingdom 2011.
 Copyright © 2009 Worldskills International.
 All Rights Reserved.



Skill: CNC Milling					
Scale: 1:1	Date: 06/09/2011	Paper: A2			
Drawn / Design by:			Drawing No: BR-CNC-01		
Description:			Rev:	Page: 1/1	

PRODUCED BY AN AUTODESK EDUCATIONAL PRODUCT

PRODUCED BY AN AUTODESK EDUCATIONAL PRODUCT