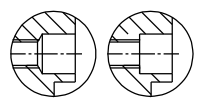
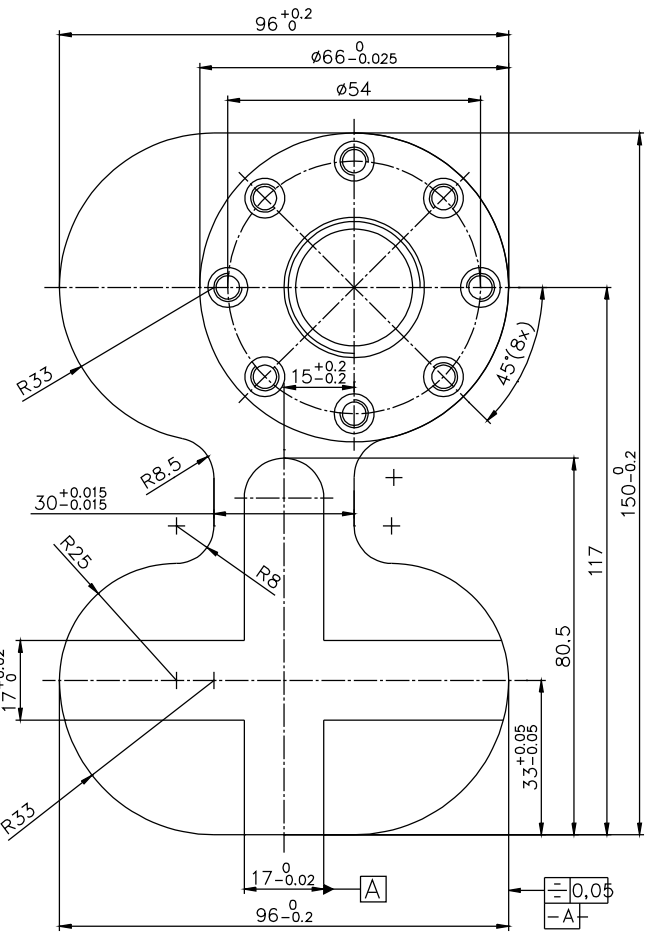
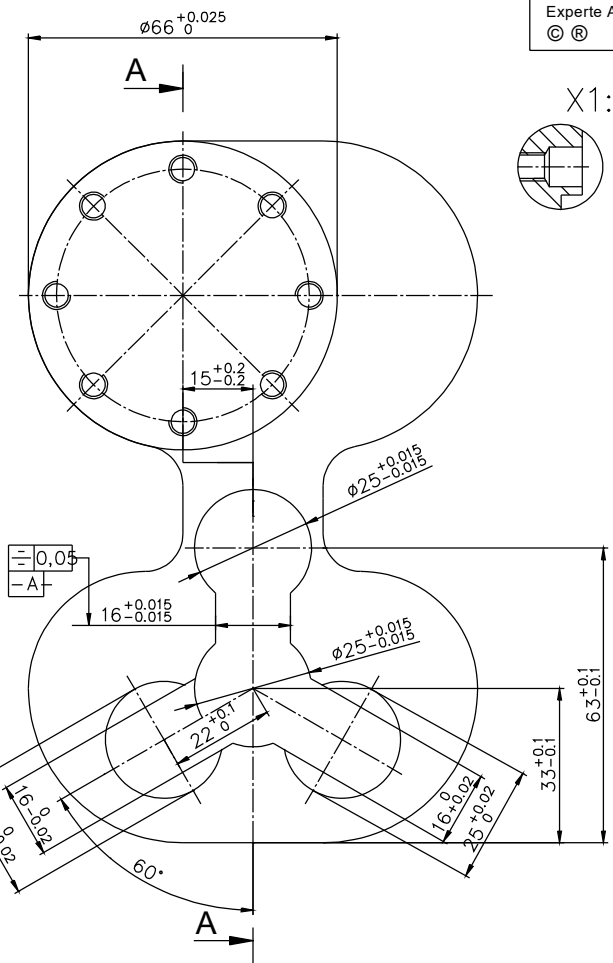
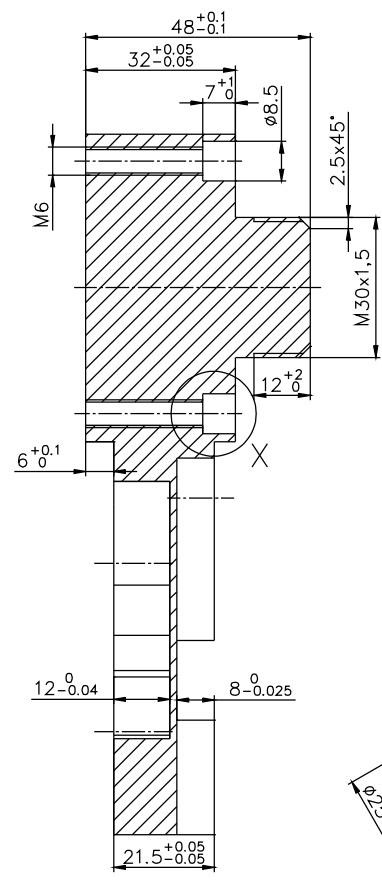


Hermann Morandell
Experte Austria
© ®

X1:1



A - A



| | | |
|--|--|--|
| Allgemeintoleranz $\pm 0.1 / \pm 0.5^*$ | General toleranc $\pm 0.1 / \pm 0.5^*$ | Toleranc general $\pm 0.1 / \pm 0.5^*$ |
| Oberfläche nach DIN ISO 1302 | Surfacetexture acc. to DIN ISO 1302 | Surface DIN ISO 1302 |
| Werkstueckkantenbruch nach DIN ISO 6784 | Edges of working parts acc. to DIN ISO 6784 | Coupure d'affilage DIN ISO 6784 |
| Form- und Lagetoleranz nach DIN ISO 1101 | Toleranc of form and position acc. to DIN ISO 1101 | Forme DIN ISO 1101 |
| METRISCH | METRIC | METRIQUE |

Werkstoff / Material / Mat'eres: Aluminium Rohmass / Dimensions / Debits : 100x50x160

INTERNATIONALER BERUFSWETTBEWERB
INTERNATIONAL VOCATIONAL TRAINING ORGANISATION
CONCOURS INTERNATIONAUX DE FORMATION PROFESSIONNELLE

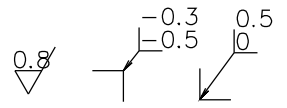
KOREA / SEOUL 2001

Beruf: CNC-Fraesen Beruf Nr.: 7
Profession: CNC-Milling Trade Nr.:
Metier: CNC-Fresage Prof. No.:

Arbeitszeit (Stunden)
Working time (hour) **6** Projektion:
Tempe (heure) Projection:

Masstab:
Scale: **1:1** Blatt: **1/1**
Re'gle: Feuille:

Nr.:
Nr.:
No.:



36.IBWB 2001-07-A/1/E